



*Built for the outback and out the back*

1300 848 553

[www.outbackportablebuildings.com.au](http://www.outbackportablebuildings.com.au)



**Your Portable  
Building Solution**

# Table of Contents

**Why Build With Us** 3

---

**Standard Inclusions & Add Ons** 4

---

**Residential Solutions** 5

---

**Extended Range** 7

---

**Cabins** 8

---

**Site Offices** 9

---

**Worker's Quarters** 10

---

**Amentities Block** 11

---

***“At Out-Back Portable Buildings’ our mission is to provide high quality buildings at an affordable price.”***

# 10 Reasons to Build with Out-Back Portable Buildings

## Experience

With over 20 years' of experience in the construction business, we know our stuff. You can rely on our experience as a registered Master Builder Association member.

## Complete project management

We take care of absolutely everything, from gathering information required for submitting building consent, to organising your delivery we can arrange all transport and placement on site.

## Quality products

All of the products and materials we use have been carefully selected to provide the best value for your investment and sourced from local Australian suppliers.

## Ease of Connection

We design your building so that your installation is as close to 'plug and play' as it can be.

## Family business

We are a family business, with strong family values. Your building will be given the same care and attention as if it were for one of our own family members.

## Affordable Options

Choose from a number of options to suit your building requirements and budget.

## Local specialists

We employ local qualified trades, ensuring quality and compliance for Australian Standards and Australian conditions.

## Custom Buildings

Although we provide floor plans and design concepts, our team can cater to any variation of building in size, configuration and fit-out. This includes the capacity to join our buildings for larger configurations.

## Production

Our buildings are made to order at our site in Murray Bridge and can be built faster than a conventional building.

## 10 Year Guarantee

We provide a 10-year structural & workmanship guarantee on all of our portable buildings.

## Inclusions & Add Ons

At Out-Back Portable Buildings, we recognise that everyone's building needs differ and that's why we manufacture your building from the ground up!

### Standard Inclusions that are found in every building:

- ✓ Strong Steel Skid Base
- ✓ Vinyl Flooring
- ✓ Steel Frames
- ✓ External Cladding
- ✓ Colour-Coded Flashings
- ✓ Sliding Doors and Windows with Flyscreens
- ✓ Standard Insulation
- ✓ Smoke Detector
- ✓ Ceiling Lights
- ✓ Double Power Points



### Additional Options that can be added on to your building:



- ✓ Patio
- ✓ Kitchen & Appliances
- ✓ Bathroom
- ✓ Laundry
- ✓ Air Conditioner
- ✓ Ceiling Fan
- ✓ TV Point
- ✓ Data Points
- ✓ Wardrobes
- ✓ Roller Blinds
- ✓ Guttering



# Residential Solutions

## 6x3 Teenager Retreat



## 6x3 Studio Apartment



## 9x3 Self-Contained Granny Flat



## 9x3 Two Room Apartment



*Instantly  
add  
space  
to your  
home!*

## 12x3 Teenager Retreat



## 12x3 Self-Contained 2 Bedroom Tiny Home



## 12x3 Park Home with Ensuites



## 12x3.5 Self-Contained 2 Bedroom Tiny Home





## The Extended Range

### 14x4 Self-Contained 2 Bedroom Tiny Home



### 9x6 Joined 2 Bedroom Home



### 12x6 Joined 3 Bedroom Home



# Cabins

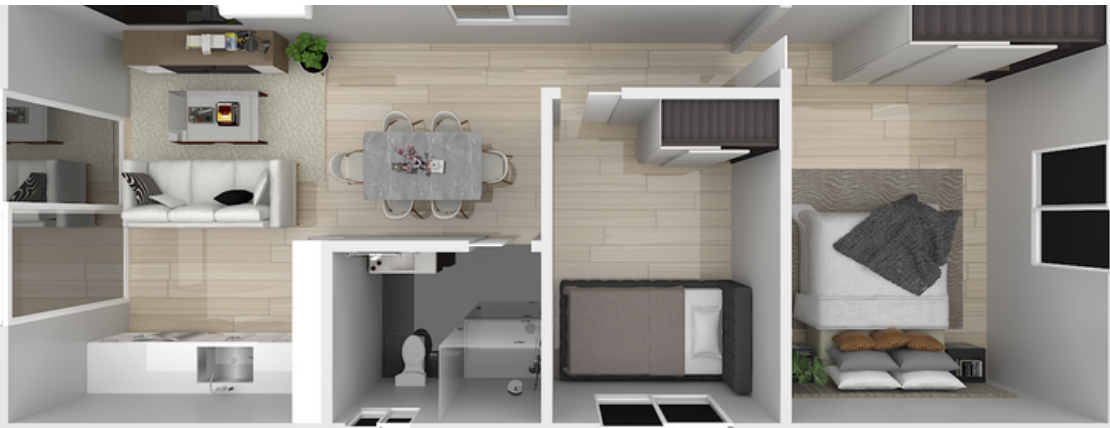
## 6x3 Open Plan Cabin



## 10x3 One Bedroom Cabin



## 10x4 Two Room Cabin



## 12x4 Two Room Cabin





## Site Offices

### 6x3 Open Plan Office



### 9x3 Open Plan Office

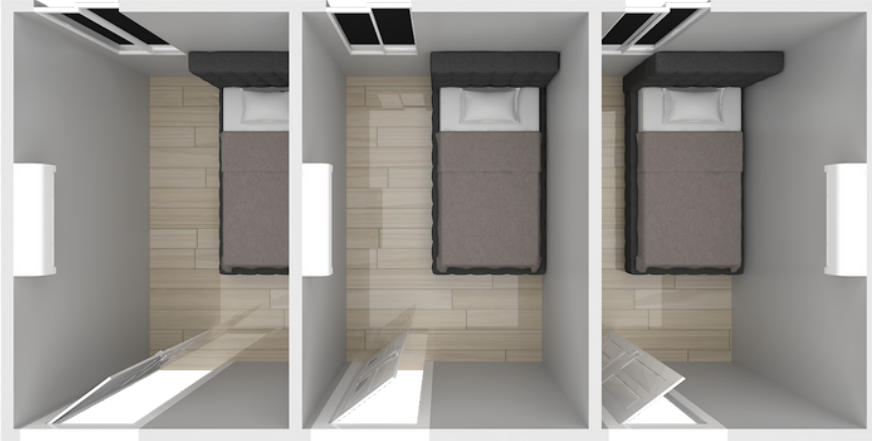


### 12x3 Open Plan Office with Toilets



# Worker's Quarters

## 6x3 Worker's Accommodation



## 9x3 Two Room with Ensuites



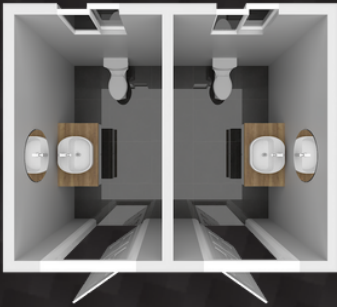
## 12x3 Worker's Accommodation



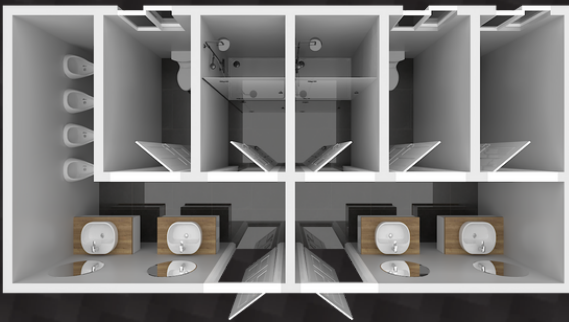


## Amentities Block

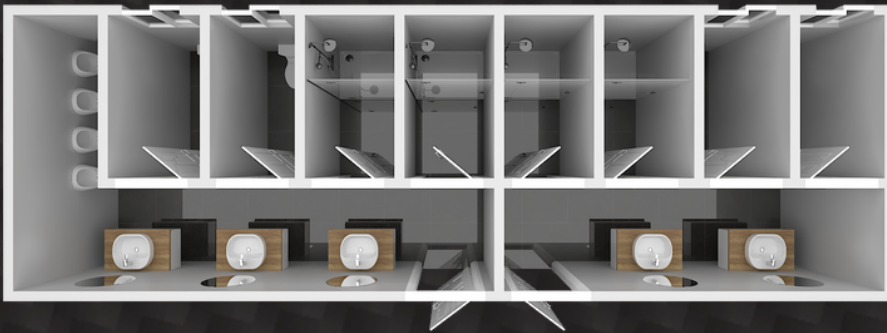
### 3x2.4 Toilet Block



### 6x3 Ablution Block



### 9x3 Ablution Block



### 12x3 Male, Female & Disabled



*Ask us  
about our  
customised  
options to  
suit your  
requirements!*

